



CHARTHAM PARISH NEIGHBOURHOOD PLAN

Vision and Objectives | New website | How you can help

Thank you!

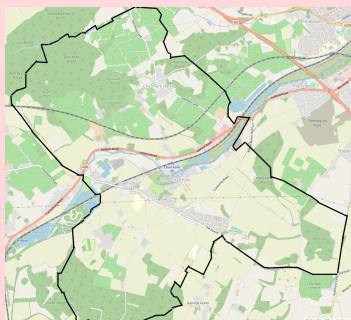
Thank you to everyone who has helped us to get this far, especially the 170+ people who responded to our Vision & Objectives survey.

Keep in touch!

A Neighbourhood Plan is about community. We want to involve you! Email neighbourhoodplan@chartham-pc.gov.uk to subscribe to regular email editions of this newsletter with clickable links.

No access to the internet? Receive a paper copy of our newsletters by contacting our Parish Clerk: The Clerk, Chartham Parish Council, Chartham Village Hall, Station Road, Chartham, Kent CT4 7JA. Tel: 01227 738110. Email charthamparishcouncil@gmail.com

Please **like our Facebook page** & share our posts. [facebook.com/CharthamNeighbourhoodPlan](https://www.facebook.com/CharthamNeighbourhoodPlan)



Our Vision and Objectives

Vision:

In 2031 we will be known as a friendly, rural, sustainable community spread across our distinct settlements in a beautiful quiet countryside setting.

Our Objectives are to:

1. Deliver appropriate development in the right place which meets local need.
2. Enable safe and sustainable movement within our parish, promote connections to nearby towns, whilst reducing vehicle trips on our roads.
3. Address, so far as possible, existing issues within our built environment.
4. Enhance community spirit, health and wellbeing.
5. Reinforce the distinctiveness of our settlements in their countryside settings.
6. Protect and enhance the value of our local landscape and habitats.
7. Respond to climate emergency and introduce adaptation and mitigation to create a healthy environment for future generations.
8. Promote a vibrant and prosperous rural economy.

We will then set up some working groups to consider each of our objectives and the best way to achieve them.





Our progress so far...

- ✦ *Our Neighbourhood Area designation was approved by Canterbury City Council in December 2019.*
- ✦ *Our Steering Group (consisting of members of the Parish Council and local residents) has been meeting together regularly.*
- ✦ *We have gained funding to employ experts to help with the process.*
- ✦ *We engaged a planning consultant to help ensure our work is focused and to give us advice on planning legislation and policies.*
- ✦ *We have made a Survey to decide on our Vision and Objectives.*

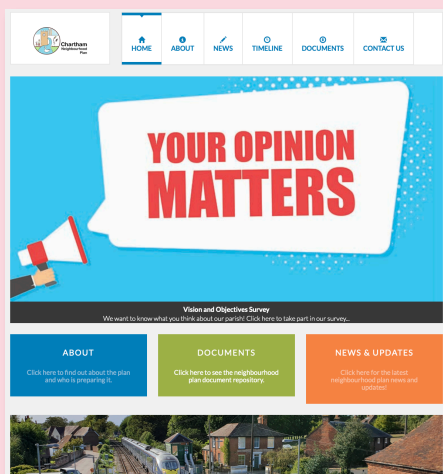
Our next steps

- Now that we have analysed the data from our Vision & Objectives survey, we will be deciding on the direction that our working groups need to take.
- We will be adding as much research and documentation to our evidence base as possible to give us a robust Neighbourhood Plan.
- We are commissioning a Housing Needs Survey to provide us with robust, objectively assessed data on our local housing needs that will enable us to understand what housing we should plan for in our Parish in terms of quantity and type of housing.

Can you help?

We will soon be establishing working groups who will be working out how best to deliver our plan’s objectives. **We would love you to help us and join one!** Do keep an eye out for information about these on charthamnp.com, Facebook, the Chartham Parish Council website and notice boards around the Parish.

We are looking for **beautiful photographs** of Chartham Parish to use for our publicity. **Do email us if you have any.** Full credit will be given for any images we use. Please send your high resolution photos to: neighbourhoodplan@chartham-pc.gov.uk



Visit our new website for the links!

Please visit our new Chartham Neighbourhood Plan website www.charthamnp.com Here you’ll find much more detail about what a Neighbourhood Plan is, together with the latest updates on our progress and other ways in which you can get involved.

There’s a documents link to the newsletter with clickable links, minutes from our meetings and a timeline of our progress through the Neighbourhood Plan process.